

1 -4: *Figur 1, Figur 3, Figur 2, Figur 4*  
Photographs, Digital C-Print, 83x125cm

5: *Hautgrenzen*  
Video / Sound, Projection, 24:00 min.  
Co-author: Andy Cowling

6: *Untitled (various)*  
Photographs, Digital C-Print / Backlit Print, various sizes

Kuration:  
Mera Dorin, Selina Hillebrand, Clara Schamp, Lukas Gutsfeld

Dank an den Kunstraum 53, die Kulturcampus-Projektförderung der Sparkasse Hildesheim Goslar Peine und den AStA Hildesheim für die Ermöglichung des Projekts.

Persönlicher Dank an: Andy, Lukas, Vilja, Merve, Selina, Clara und Paul.

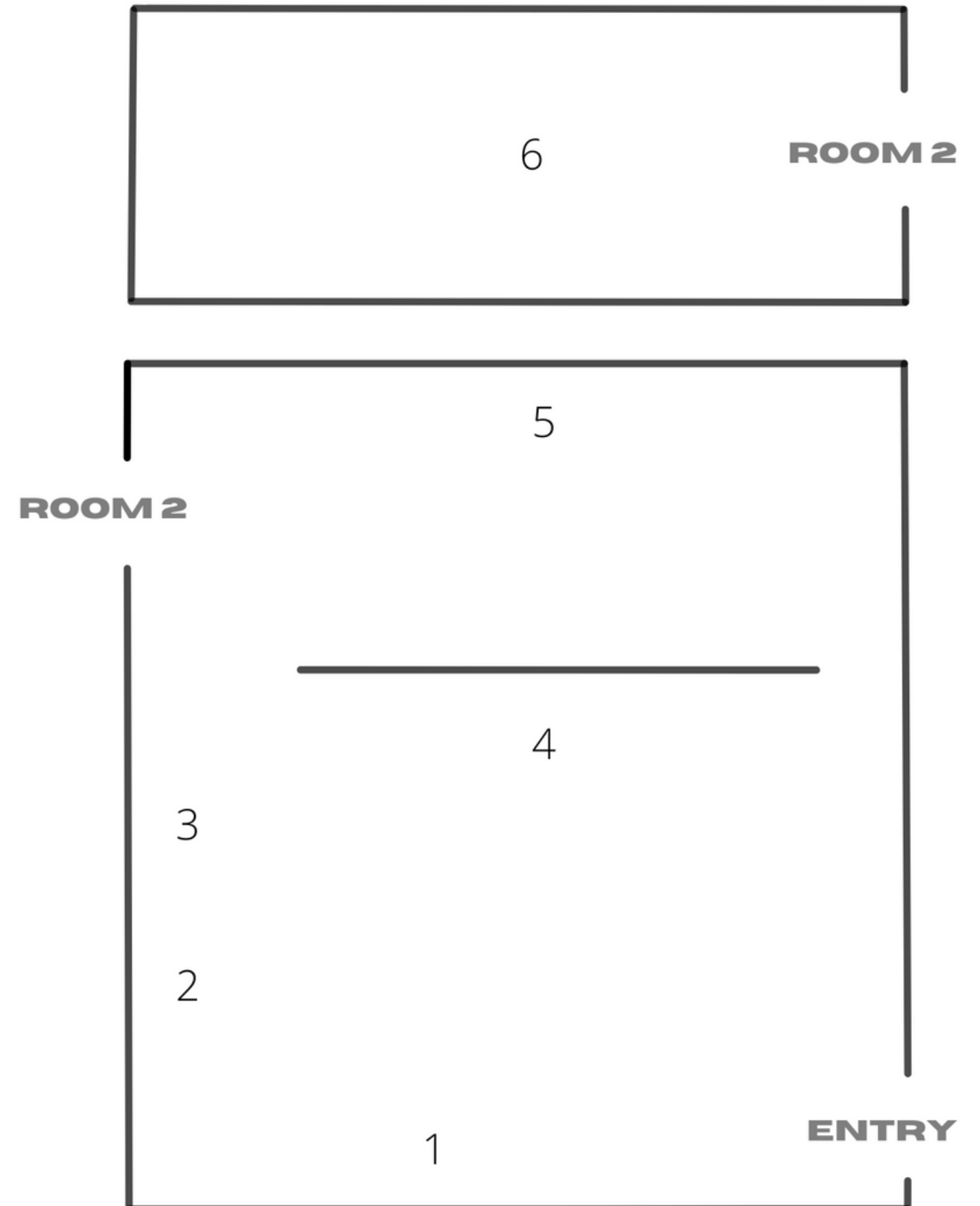
**KUNST  
RAUM  
53**

 Sparkasse  
Hildesheim Goslar Peine

 AStA  
UNI.HILDESHEIM

# MERA DORIN

## KOERPER GRENZ KONTROLLEN



The body is the focus of the project KOERPER GRENZ KONTROLLEN. Society fixates on what the body means, we identify ourselves and others with this meaning. Through photography the project seeks to show the limits of the body as a marker of identity and I aspire to gain a feeling of control over my own body and image. The project is a self-exploration as well as a reflection on the predominant concepts of the connection between the body and identity. Every piece exhibited has been created as part of the project between 1st of October and 4th of December 2021. Every body shown is my own body. The main room introduces four characters: FIGUR 1[1] is an artificial being, a cyborg or a doll. She is the physical manifestation of the hopes to bring the perfect, compliant woman into existence. Her world is one of artificiality, a world where flowers are plastic and the sky is painted. In an attempt at self-creation and gain of control she marked her limbs and joints with colour to take part in her own making. FIGUR 3[2] is abnormality. She is the body that is the deviation from the norm, she stands for the monstrosity of being perceived as something different or other. She is an introverted character, hiding most of herself from view. The golden horns are the only body part fully visible. It is unclear what is hidden beneath the cloak, it might be a creature partly animal or insect or a human body non-conforming to societal expectations. Her surroundings are an undefined grid, analog or digital, not further specified. FIGUR2[3] is about the face as the part of the body that stands for individuality. In all the figure photographs the person's faces are modified or hidden. This figure specifically stands for masks, the mask here being

subtle and merged with the figure's features. It is the unrecognised masking of everyday life. The figure's body is exposed in a spotlight and prepared to be inspected and perfected. FIGUR4[4] is an impersonation of the confusion experienced in the process of self-discovery. They positioned themselves awkwardly and uncomfortably trying to connect to their body. Body parts are being tried out or discarded in search for alignment of internal identification and outer features. The room in which they are situated is a white, open space except for cubes sewn and tied together, under construction as well. The video work HAUTGRENZEN[5] represents the body on a physical level. Microscopic images show the surface of the skin as the border of the body. The close proximity from camera to skin constitutes in the images becoming abstracted and being removed from their original contexts. The work has been created in collaboration with the sound artist ANDY COWLING who took up the visuals' impression of texture as well as intimacy and deconstructed pop-esque songs into a sound piece that sonically moves through momentary impressions of emotional states such as intimacy, artificiality, excitement, disappointment, joy and loneliness. The visuals have then been arranged to follow rhythm and story of the sound. Ultimately, neither imagery nor audio find a conclusion and keep trying to find meaning in a cycle of repetition. The photographic works in Room 2 under the title TWO LAYERS OF DARK PINK[6] show further deconstruction. Sets and costumes of the photographic figures of the main room are being taken apart. The lighting is creating a setting removed from reality.